

PRODUCT CODE: PS5G
PLAIN SADDLE

DESCRIPTION

2" Plain Saddle

FINISH

BZP

MATERIAL

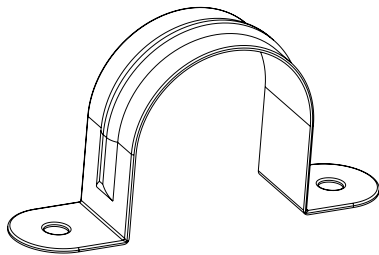
Pressed Steel

PACKAGING

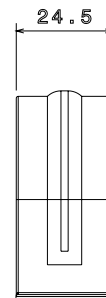
Packed in qty 50

ADDITIONAL NOTES

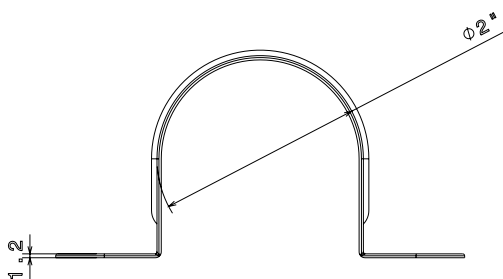
Conforms to BS EN61386-1
Compliant to LU Standard 1-085 (for use on surface & sub-surface locations)



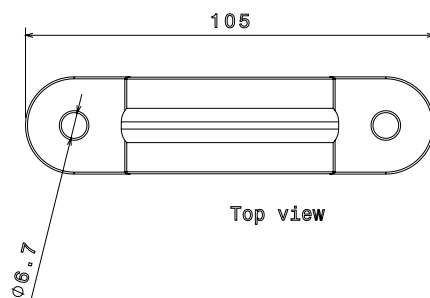
Isometric view



Side view



Front view



Top view